



# 4-H NEWS LEE COUNTY

TEXAS A&M  
**AGRI LIFE**  
EXTENSION

## Roundup Report !



Lee County 4-H participated in the Texas 4-H Round held in College Station on the campus of Texas A&M University. Mandy Berger was awarded a 4-H Scholarship and the Horse Quiz Bowl Team brought home 2nd Place, earning them a spot in the All American Quarter Horse Congress National Horse Quiz Bowl in October held in Columbus, Ohio.

Mandy received a Stiles Farm Scholarship. This \$4,500 scholarship is awarded to a graduating High School Senior who plans to major in Agriculture and Life Sciences and must be attending a Texas A&M System University and Roundup in May, earning them a spot at State reside in either Bastrop, Bell, Burnet, Lee, Milam, Travis or Williams counties. Two Stile Torn, supported their team in College Station



Amanda Berger receives the Stiles Farm scholarship presented by Dr. Doug Steele, Director of Texas A&M AgriLife Extension Service.

The Stiles Farm, located in Williamson County, is a non-profit, self-supporting institution established for the advancement of agriculture to benefit all Texans.

Horse Quiz Bowl team members Shelby Burris, Garlyn Radford and Makayla Woodward first competed at the District 9 competition. Coaches, Patti Radford and Lucy Torn, supported their team in College Station along with County Extension Agents Tonya Poncik and Keeton Ehrig.

"I'm really proud of these girls. They have been working hard, studying, and gathering information all year. Lee County has been one of the top teams for so long but never made the top three. These girls are very excited to take Lee County to a National contest," said Coach Patti Radford.

### Lee County Extension Office

310 S Grimes Street  
Giddings, TX 78942

979-542-2753; office  
979-542-2362; fax  
<http://lee-tx.tamu.edu>  
e-mail: [lee.county@agnet.tamu.edu](mailto:lee.county@agnet.tamu.edu)

**Tonya Poncik**  
County Extension Agent  
Family & Consumer Sciences

**Keeton Ehrig**  
County Extension Agent  
Agriculture/Natural Resources

Educational programs of the Texas A&M AgriLife Extension Service are open to all people without regard to race, color, religion, sex, national origin, age, disability, genetic information or veteran status. The Texas A&M University System, U.S. Department of Agriculture, and the County Commissioners Courts of



Lee County Horse Quiz Bowl team members, Makayla Woodward, Garlyn Radford and Shelby Burris are pictured with Coach Petti Radford. The team will next compete at Nationals in October.

*Continued on Page 4*

### Have you met Amy, Giddings 4-H?

Amy Daniels, a 3rd Grader and first time Exhibitor at the county livestock show, brought her best game to the show. In addition to her Breeding/Meat Rabbits and Goat, Amy brought an entry to the Horticulture Division of the Foods and Creative Arts. Her entry, which won a Grand Champion ribbon, was a head of cabbage. Amy's class learned about seed cultivation. Many students did see a plant emerge, but Amy continued to care for her plant after she took it home, where it grew so large, it had to be transplanted outside. When it was time for the show, Amy dug up the cabbage and repotted it for contest entry. Growing food ... a great endeavor! Congratulations, Amy!



# Kick-Off Meeting & Awards Program

The 2014-2015 4-H Kick-Off Meeting and Awards Program will be held on **Sunday, August 24**, at 2 pm, at the Lincoln Community Center in Lincoln. While celebrating the start of new 4-H year, Awards and Recognitions will be made for the accomplishments and achievements of the last year.

Officer installation will be conducted for both Club Officers and 4-H Council Officers. A list of all elected officers for 2014-2015 is on Page 3.

With so many project areas represented through the Lee County 4-H membership, the Kick-Off Meeting and Awards Program is a great opportunity to introduce your friends and neighbors to what 4-H has to offer them.



On-line enrollment opens Sept. 1. Participation Fees (enrollment fees) are \$20/person, if

registered before October 31. After that time, fees increase to \$25/person.

*This meeting counts toward the "meeting requirements" for 4-H exhibitors at the 2015 Lee County Junior Livestock Show.*

Everyone will be treated to an Ice Cream Social, provided by the Lee County 4-H Council and Parent Volunteer Association.

Families attending the Kick-Off Meeting will receive additional information regarding county-wide fund raising.

The Lee County 4-H has conducted three major, county-wide fund raisers in the past years:

- Fried Chicken Dinner, September 21
- Poinsettia, October/November
- Pecans, October/November
- Each Fund Raiser has a corresponding

point system, through which 4-H members can earn cash rewards. Points can also be earned through "sales" and/or "service" to the 4-H program.



Events like the ice cream social at the Kick-Off Meeting, contest entry fees, and social activities throughout year are supported by these fundraising efforts.

**Please RSVP to the Extension by August 21.**

**Remember !!!**



a 15% discount off standards rates for all Texas 4-H families

When booking on-line, enter "TX4H" as the Promo/Corporate Code.



## Scholarship Recipients

### 2014 Lee County 4-H PVA Scholarship Recipients

Bradly Schautschick - Serbin 4-H

Trenton Blansit - Giddings 4-H

Allison Kaiser - Serbin 4-H

Taylor Wood - Dime Box 4-H

Micah Jackson - Giddings 4-H

**Mary Ellen Whitsel [far right], Chairman of the Lee County 4-H Parent Volunteer Association, along with Extension Agent Tonya Poncik [left], present scholarships to the 2014 PVA Scholars.**

## Club Officer Announced for 2014 - 2015 4-H Year

Lee County 4-H is preparing for a great 2014 - 2015 year. Clubs have elected their officers and they're destined to lead their membership into areas of great success. Congratulations to the following 4-H members on their election.

### Dime Box

President Whitney Whitsel  
 Vice-President Delaney Hirsch  
 Secretary Kelly Shows  
 Treasurer Hannah Kipp  
 Reporter Emme Dallmeyer  
 Bradley Lehmann  
 Parliamentarian Grant Gold  
 Council Delegate Morgan Wood  
 Alt. Delegate Tanner Whitsel

### Giddings

President Crystal Colley  
 Vice-President Haileigh Blansit  
 Secretary Bailey Lyon  
 Treasurer Camryn Wilhelm  
 Parliamentarian Kaydien Potter  
 Council Delegate Savannah Hosch

### Lexington

President Tyler Otte  
 Vice-President Allison Schneider

Secretary Chelsea Schneider  
 Treasurer Jacob Otte

### Lincoln

President Jenna Kieschnick  
 Vice-President Brooks Namken  
 Secretary Toye Walther  
 Treasurer Ashley Archer  
 Reporter Micaela Schimank  
 Historian Wyatt Walther  
 Parliamentarian Bailee Smith  
 Council Delegate Trevor Williams

### Northwest Lee County

President Victoria Gifford  
 Vice-President Kolton Allen  
 Secretary Kylee Ricketson  
 Treasurer Brooke Wallingsford  
 Reporter Emma Smith  
 Parliamentarian Ashanti Cooper  
 Photographer Elexus Cooper  
 Council Delegate Keshan Cooper  
 Steven Kellenberger

### Serbin

President Brent Perry  
 Vice-President Clay Mertink  
 Secretary KayAnne Zoch  
 Treasurer Kailey Burgdorf

Reporter Loryn Henderson  
 Council Delegate Robert Zoch

### Texas Stars 4-H Horse Club

President Shylee Turner  
 Vice-President Jody Taylor  
 Secretary Ariston Turner  
 Treasurer Shannon Pilkinton  
 Reporter Cody Messer  
 Parliamentarian Patrick Hawkins  
 Council Delegate Whitney Walker

County-wide activities and community service projects are planned by the Lee County 4-H Council. The County Council meets four or more times a year and all 4-H members, parents and leaders are welcome to attend meetings.

Council Officer elections will be held on Thursday, August 7, during a 4-H Council meeting scheduled for 6 pm in the Extension office in Giddings. All members of the Lee County 4-H program are invited to participate during this meeting.

# what are YOU doing this summer?

Lee County 4-H will be well represented throughout the State this summer in a variety of activities. Here is a list of just a few of the 4-H'ers and the activities they're participating in!

Zoe Beadles — District Horse Show  
 Shelby Burriss — State 4-H Roundup  
 Jewell Glover — County Camp  
 Patrick Hawkins — District Horse Show  
 Alexis Herrera — District Horse Show  
 Abbie Horne — County Camp  
 Kadence Looper — District Horse Show

Emma Lyon — County Camp  
 Bailey Lyon — County Camp  
 Cody Messer — District Horse Show  
 Maluhia Pestana — District Horse Show  
 Madison Pilkinton — District Horse Show  
 Shannon Pilkinton — District Horse Show  
 Garlyn Radford — State 4-H Roundup  
 Emily Ross — Prime Time I Camp  
 Megan Rother — District Horse Show  
 Haley Schneider — District Horse Show  
 Makenzie Schneider — District Horse Show  
 Amber Schulze — District Horse Show

Amber Smith — District Horse Show  
 Emma Smith — County Camp & Prime Time II Camp  
 Jacy Taylor — District Horse Show  
 Jodie Taylor — District Horse Show  
 Ariston Turner — District Horse Show  
 Cortlin Turner — District Horse Show  
 Shylee Turner — District Horse Show  
 Whitney Walker — District Horse Show  
 Brooke Wallingsford — County Camp  
 Makayla Woodward — State 4-H Roundup

<http://Lee.AgriLife.org/>

# Roundup Report !

*Continued on Page 1*

Results from District Roundup are:

**Food and Nutrition Quiz Bowl** ---- 4th Place

Junior Team: Lillie Clifford  
Naryah Galvan  
Abbie Horne

**Horse Quiz Bowl** ----- 2nd Place

Senior Team: Makayla Woodward  
Shelby Burris  
Garlyn Radford

**Horse Quiz Bowl** ----- 1st Place

Junior Team: Autumn Bartlett  
Ella Lenox  
Lettie Morris  
Kylee Ricketson

**4-H S.E.T.** ----- 1st Place

Haley Henderson  
*Physics, Engineering & Astronomy*

**Consumer Decision Making**

-- *High Point Individuals*

Naryah Galvan - Intermediate 9th Place  
Haley Henderson - Junior----- 6th Place  
Abbie Horne - Junior----- 9th Place

**Consumer Decision Making** ----- 2nd Place

Junior Team: Haley Henderson  
Abbie Horne  
Carlie Weiser

**Consumer Decision Making** ----- 5th Place

Senior Team: Jenna Kieschnick  
Kelly Shows  
Whitney Whitsel

**Fashion Show - Buying**

Abbie Horne ----- 2nd Place  
Junior — *Semi-Formal to Formal*

Naryah Galvan ----- 2nd Place  
Intermediate — *Business/Interview*

Christopher Schulz ----- 3rd Place  
Senior — *Business/Interview*

**Fashion Show - Construction**

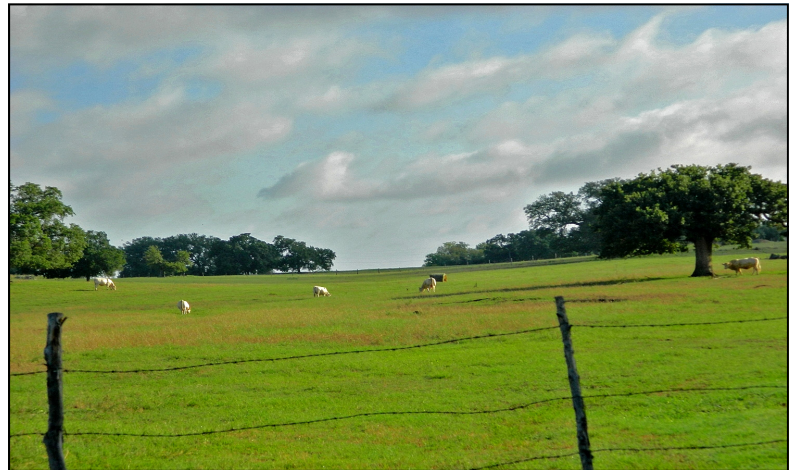
Lillie Clifford ----- 2nd Place  
Intermediate — *Semi-Formal to Formal*

**Photography**

Abbie Horne  
Elements of Design ----- 2nd Place  
Nature & Landscape ----- 4th Place



Abbie Horne — Elements & Design  
2nd Place, District Roundup



Abbie Horne — Nature & Landscape  
4th Place, District Roundup



When Lee County 4-H hands out nicknames, we go big .....

..... like

*Big Daddy*

Sporting his new nickname hat earned at State Round. The Horse Quiz Bowl team has sense of humor!

And nicknames, are handed out to most everyone .....

..... like

*Last Minute Queen*

Tonya has the BEST ideas, but sometimes the ideas are thrown out at the last minute ! And sometimes the ideas are thrown AT Tonya the last minute.





# Lee County 4-H Virtual Fishing Tournament

**Dates:** July 4 - July 6

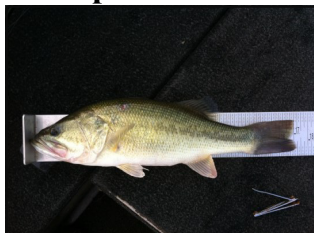
**Tournament Times:**  
July 4, 6 AM thru  
July 6, 8 PM

Entry pictures must be posted/e-mailed by midnight July 6 in order to be eligible for judging.

Results will be posted by July 8.

Prize will be awarded to longest Bass.

**Example Picture:**



[www.facebook.com/  
leecounty4h](https://www.facebook.com/leecounty4h)

**KEETON EHRIG**

Lee County  
Extension Agent, AG/NR  
310 S. Grimes St.  
Giddings, TX 78942

**(979) 542-2753**

[lee.county@agnet.tamu.edu](mailto:lee.county@agnet.tamu.edu)

## Rules:

1. Open to Lee County residents, ages 5 - 18.
2. **NO FEE** is involved.
3. **JUDGING** will be based on "Entry Pictures". Entry pictures may be posted *Lee County 4-H Facebook Group* or e-mailed to [kelsey.pearson@agnet.tamu.edu](mailto:kelsey.pearson@agnet.tamu.edu)
4. **BASS ONLY** — This is a catch and release tournament.
5. Fish from any lake, river or pond. *Participants must comply with TPWD fishing license regulations.*
6. Boats are not a requirement.
7. **PICTURE SPECIFICATIONS**
  - You will be given a Common Item (an easily accessible item) to display with your fish in the entry pictures you post.
  - The Common Item will be posted to the Facebook page on the night of July 3.
  - You *may* measure your fish on any tool of measurement such as a ruler, tape measure, etc. Measurement numbers must be legible in all photos submitted. This will ensure fair and uniform measurement entries.
  - The picture to the left is an example of how the posted picture should be arranged: the fish laying (*mouth closed*) with the Common Item visible in the picture. In the picture to the left, the common item was nail clippers.
8. You are allowed to catch as many fish as possible. Only your top bass (based on length) will be used in judging the tournament winner.

# Worn Memories

## T-Shirt Quilts



Materials will make a  
Travel-Sized Quilt.

# July 10

9 am — 4 pm; Extension Office, Giddings

Registration — \$5 for lunch

Register by July 8 — Call (979) 542-2753

Items to bring:

- full-sized flat flannel bed sheet (for batting)
- old T-Shirts (approximately 20)  
— *OR* — 4 - 5 yards of material
- Black & White thread will be available  
(bring matching thread if desired)



# Youth Wildlife Program



Sponsored by Lee County Wildlife Association

# Friday, July 18

9 am — 4 pm

Extension Office, Giddings

*For youth, 6<sup>th</sup> grade thru 12<sup>th</sup> grade.*

Lunch will be provided.

Register by July 14 — Call (979) 542-2753

- Dissection and anatomy of deer and fish
- Different examples of fish from various bodies of water
- Observe different aspects of wildlife

### GUEST SPEAKERS:

Laura Sherrod, Wildlife Biologist, TPWD

Todd Sink, Extension Fisheries Specialist